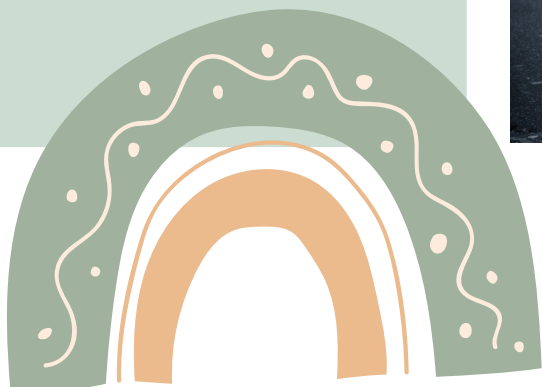


Peer Supporter's challenges

- Breaking the boundaries

How to cope with difficult decisions:

- Create an environment where peer supporters can feel safe to share and open up
- Accommodate the concerns
- Search for alternatives and let them try
- Check on the lessons learned



Unit 4 dives into the different roles a peer supporter may have depending on the organization's needs and its goals (whether it's a mental health institution or a community service). It is essential to articulate a precise and clear job description and clear communication lines inside and outside the organization. Often, cases are reported where peer supporters are challenged with the position's roles and the new dynamics this brings to pre-established relations. Sometimes they may break the boundaries to be trusted and effective in their role.

Now, how strict should the professionals be when it comes to this...?



Co-funded by the
Erasmus+ Programme
of the European Union

